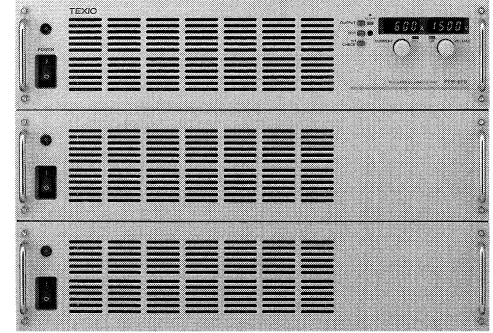


Regulated DC Power Supplies

PT Series

PT10-300 (10V/300A)
PT10-600 (10V/600A)
PT10-900 (10V/900A)
PT10-1200 (10V/1200A)
PT10-1500 (10V/1500A)
PT15-200 (15V/200A)
PT15-400 (15V/400A)
PT15-600 (15V/600A)
PT15-800 (15V/800A)
PT15-1000 (15V/1000A)
PT20-150 (20V/150A)
PT20-300 (20V/300A)
PT20-450 (20V/450A)

PT20-600 (20V/600A)
PT20-750 (20V/750A)
PT30-100 (30V/100A)
PT30-200 (30V/200A)
PT30-300 (30V/300A)
PT30-400 (30V/400A)
PT30-500 (30V/500A)
PT60-50 (60V/50A)
PT60-100 (60V/100A)
PT60-150 (60V/150A)
PT60-200 (60V/200A)
PT60-250 (60V/250A)



GP-IB
OPTION

- Large capacity of 3kW, thin type of 99mm for rack mount, Light weight of 18kg.
- Front air intake method forced air cooling for piling up the units.
- The output can be increased by the parallel and serial operation with one control method (master/slave).

- The output voltage, current, and ON/OFF can be controlled by the external voltage, resistance, and external signal.
- Protection functions of OVP (over voltage), OCP (over current), OHP (over heating), and open-phase detection.
- GP-IB control with GP-IB adaptor GP-600B and OP-18-PT.

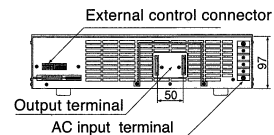
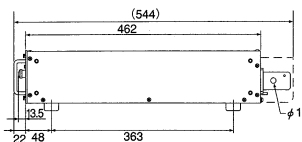
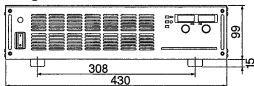
PU Series Specifications

Model	Output (Voltage, Current)	Ripple		Line regulation		Load regulation		Power consumption (VA)
		CV mV rms	CC mA rms	CV mV	CC mA	CV mV	CC mA	
PT10-300	0V-10V,0A-300A	15	1500	6	150	12	200	6500VA
PT10-600	0V-10V,0A-600A	15	—	6	1200	12	3000	13000VA
PT10-900	0V-10V,0A-900A	15	—	6	1800	12	4500	19500VA
PT10-1200	0V-10V,0A-1200A	15	—	6	2400	12	6000	26000VA
PT10-1500	0V-10V,0A-1500A	15	—	6	3000	12	7500	32500VA
PT15-200	0V-15V,0A-200A	15	1500	10	100	16	200	6500VA
PT15-400	0V-15V,0A-400A	15	—	10	800	16	2000	13000VA
PT15-600	0V-15V,0A-600A	15	—	10	1200	16	3000	19500VA
PT15-800	0V-15V,0A-800A	15	—	10	1600	16	4000	26000VA
PT15-1000	0V-15V,0A-1000A	15	—	10	2000	16	5000	32500VA
PT20-150	0V-20V,0A-150A	20	1500	12	100	20	200	6500VA
PT20-300	0V-20V,0A-300A	20	—	12	600	20	1500	13000VA
PT20-450	0V-20V,0A-450A	20	—	12	900	20	2250	19500VA

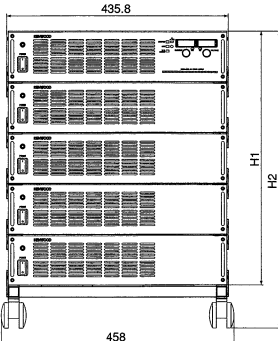
Model	Output (Voltage, Current)	Ripple		Line regulation		Load regulation		Input current (at 100V/200V)
		CV mV rms	CC mA rms	CV mV rms	CC mA rms	CV mV rms	CC mA rms	
PT20-600	0V-20V,0A-600A	20	—	12	1200	20	3000	26000VA
PT20-750	0V-20V,0A-750A	20	—	12	1500	20	3750	32500VA
PT30-100	0V-30V,0A-100A	20	1000	16	70	30	200	6500VA
PT30-200	0V-30V,0A-200A	20	—	16	400	30	1000	13000VA
PT30-300	0V-30V,0A-300A	20	—	16	600	30	1500	19500VA
PT30-400	0V-30V,0A-400A	20	—	16	800	30	2000	26000VA
PT30-500	0V-30V,0A-500A	20	—	16	1000	30	2500	32500VA
PT60-50	0V-60V,0A-50A	20	1000	32	70	50	200	6500VA
PT60-100	0V-60V,0A-100A	20	—	32	200	50	500	13000VA
PT60-150	0V-60V,0A-150A	20	—	32	300	50	750	19500VA
PT60-200	0V-60V,0A-200A	20	—	32	400	50	1000	26000VA
PT60-250	0V-60V,0A-250A	20	—	32	500	50	1250	32500VA

- Input voltage: 200V(+/-10%) three-phase 47-63Hz
- Accessories: Instruction manual, Protection cover for output terminal, Bolts and nuts

Single unit



Plural combination



*One body structure with
caster for more than 6kW

	2 Layers	3 Layers	4 Layers	5 Layers
H1	198.9	298.8	398.7	498.6
H2	283.5	383.4	483.3	583.2

