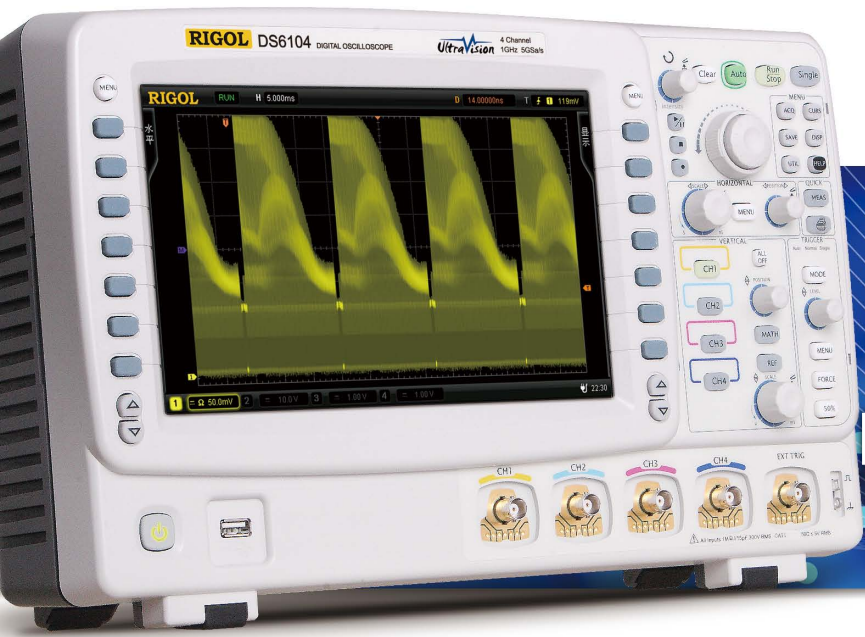




0  
1 **No.2**  
0  
2

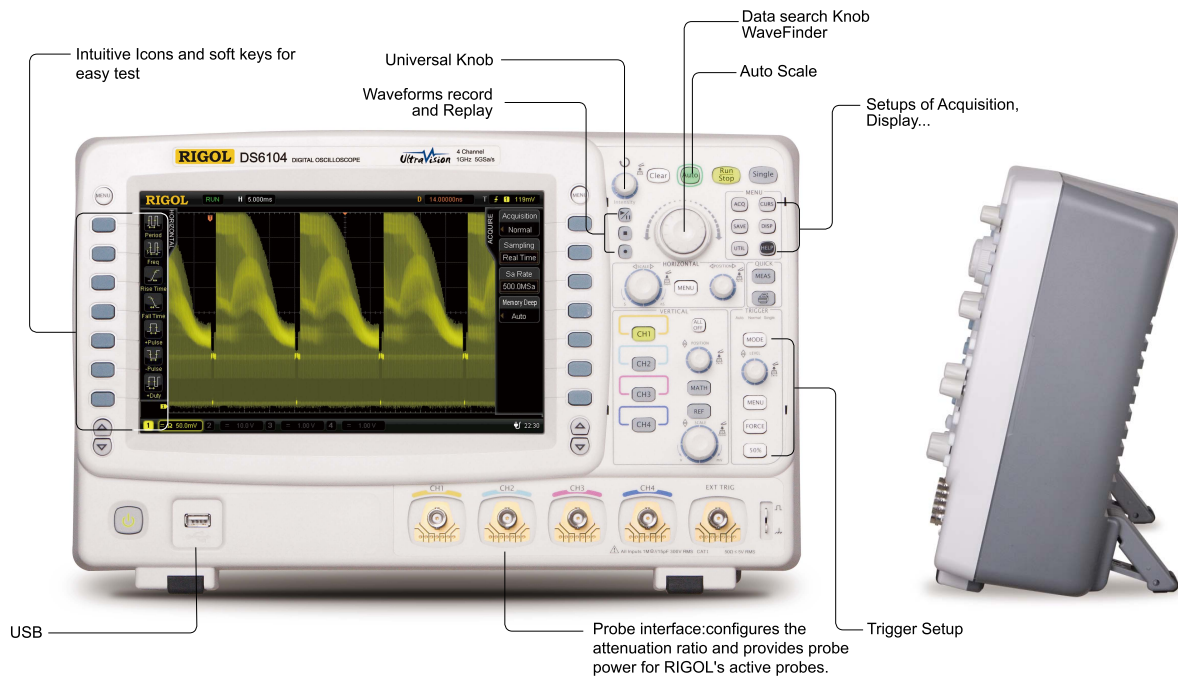


# DS6000 Series Digital Oscilloscope

- Bandwidth 1 GHz, 600 MHz
- Sample Rate Up to 5 GSa/s
- Channels 2 or 4
- Memory 140 Mpts (Standard)
- Acquisition rate Up to 120,000 waveforms per second
- Waveform recording Up to 180,000 frames
- Innovative “UltraVision” technology
- A variety of Trigger functions and Automatic measurements with statistics
- Support serial bus trigger and decode
- Dedicated data search knob“ WaveFinder ”
- Complete Connectivity USB,LAN(LXI-C),WVGA ,GPIB(Option)...
- Built-in 1GBytes Flash Memory
- Battery power option

RIGOL DS6000 series is designed to aim at the requirements of the largest digital Oscilloscope market segment from the Communications , Semiconductor, Computing, Aerospace Defense ,Instrumentation, Research/Education ,Industrial Electronics, Consumer Electronics and Automotive industries with its innovative technology, industry leading specifications, powerful trigger functions and broad analysis capabilities.

# DS6000 Series Digital Oscilloscope



Product Dimensions: Width×Height×Depth = 399mm×255.3mm×123.8mm Weight:4.05 kg (without battery)

## ► Key features of DS6000 series

### 1. Industry-leading specifications

- Up to 1GHz BW with 5GSa/s sample rate
- Standard 140Mpts deep memory
- Up to 120,000 waveforms per second acquisition rate
- Up to 180,000 frames for waveform record and replay

### 2. Innovative UltraVision technology

- Deeper memory, higher waveform acquisition rate
- Up to 256 levels intensity grading
- Real time waveform record and replay
- Customized real time hardware filters(LPF,HPF,BPF,BRF)

### 3. Broad applications

- A variety of Trigger functions and Automatic measurements with statistics
- Serial bus trigger and decode such as I2C, SPI, RS232, CAN...
- Advanced math function
- Complete Connectivity
- A variety of Probes and accessories

### 4. Attractive profile

- Large display: 10.1 inch WVGA (800x480), LED backlight
- Shallow depth: reduces the space occupied
- Light weight: easy for hand carry even with battery power option

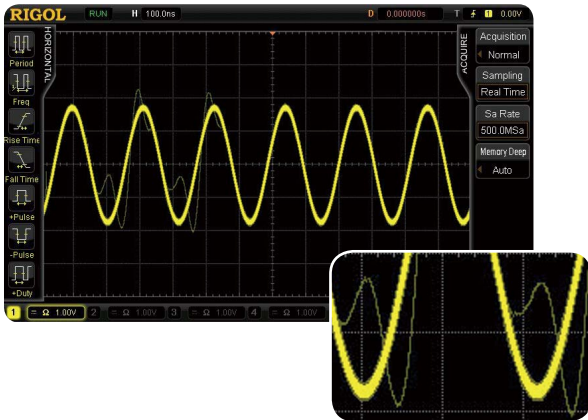
Model	DS6104	DS6102	DS6064	DS6062
Bandwidth	1 GHz	1 GHz	600 MHz	600 MHz
Max. Sample rate	5 GSa/s	5 GSa/s	5 GSa/s	5 GSa/s
Memory(Standard)	140 Mpts	140 Mpts	140 Mpts	140 Mpts
Channels	4	2	4	2
Acquisition rate	Up to 120,000 waveforms per second			
Frames recorded	Up to 180,000 frames			

## ► Recommended RIGOL probes

Model	Descriptions
RP5600	600MHz Passive probe
RP7150	1.5GHz differential/single ended active probe(Optional)

## ► Features and Benefits

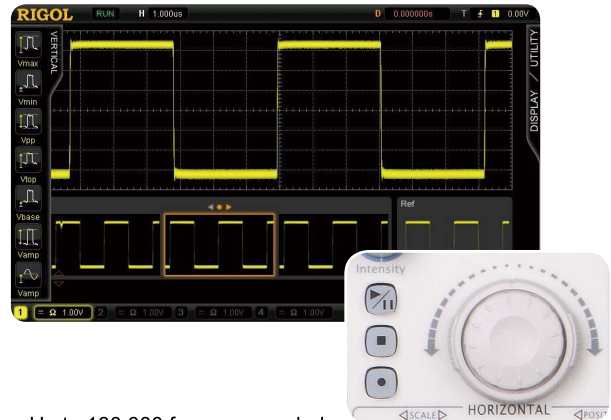
RIGOL's innovative UltraVision technology



- Deeper memory, higher waveform acquisition rate
- Up to 256 levels intensity grading
- Real time waveform record and replay
- Customized real time hardware filters(LPF,HPF,BPF,BRF)

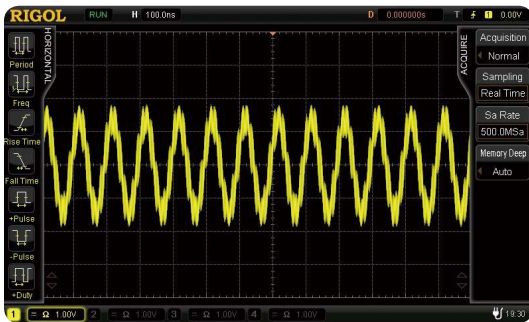
**UltraVision**

UltraVision---Real time waveform record and replay

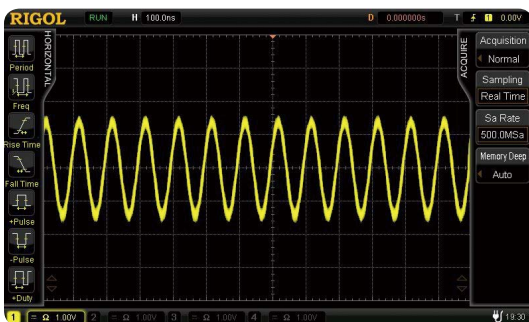


- Up to 180,000 frames recorded
- "WaveFinder"--Dedicated data search knob
- Replay and analyze the recorded waveforms

UltraVision: The customized real time Hardware filters(LPF,HPF,BPF,BRF)

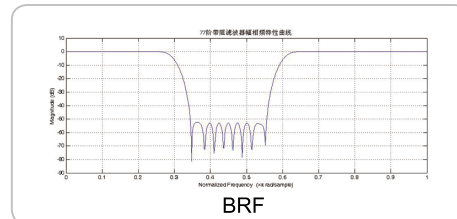
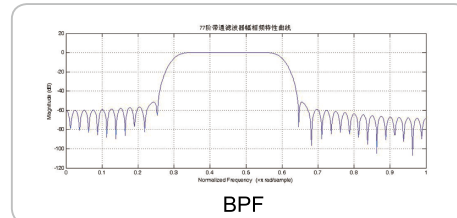
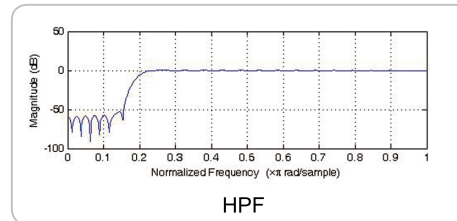
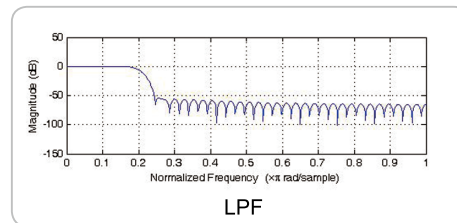


The signal with significant noise



The cleaner waveform with hardware filtering  
Hardware filter is faster than the data post processing filter

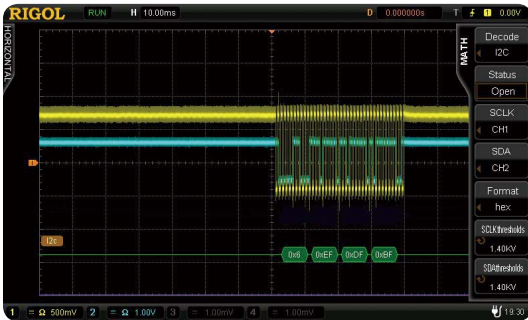
Customized Hardware filters



## A variety of Trigger functions

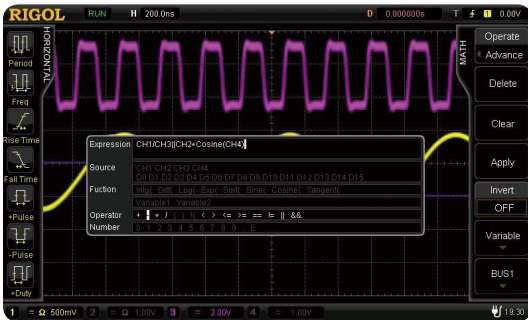
- Edge
- RS232/UART
- USB
- FlexRay
- CAN
- I<sup>2</sup>C
- SPI
- Glitch
- Sequence
- Pattern
- Video
- Pulse width
- Slew rate

## Serial bus decoding functions

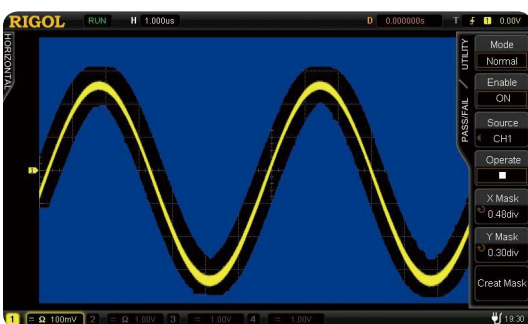


- I<sup>2</sup>C Decoding
- SPI Decoding
- CAN Decoding
- RS232 Decoding
- USB Decoding
- FlexRay Decoding...

## Advanced math function (user defined)



## Mask test functions



## Automatic measurements with statistics

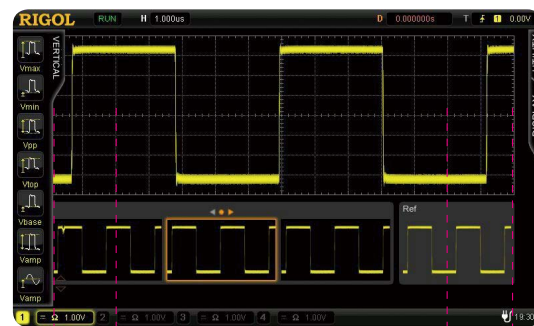
- Automatic measurements for Horizontal and vertical parameters
- Display up to 5 measurement items with statistics simultaneously
- Display all measurement items with the current value in the screen
- Intuitive icon and soft key operation for simplified testing

## Complete Connectivity



- Trigger output and calibration signal output
- 10MHz In/Out: 10MHz reference clock IN/OUT
- VGA: Connect to an external monitor or projector
- LAN: For remote control (LXI-C compliant)
- USB: 2 USB HOST ports and 1 USB DEVICE port provide PC, Flash drive, and printer connectivity
- Supports the optional USB-GPIB adapter

## Observe more signal on our wider innovative display with 14 horizontal divisions



10 divisions  
14 divisions display 40% more signal

The innovative wider display with 14 horizontal divisions

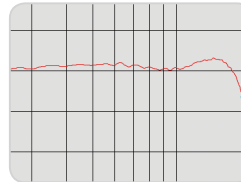
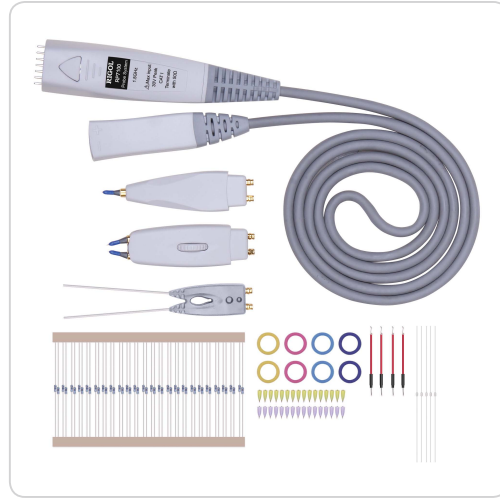
► Probes

RP5600 10:1 divider passive probe

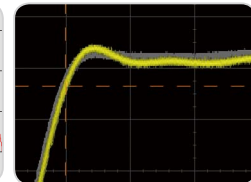


- 600MHz Bandwidth
- 10:1 passive probe
- Shipped with probe positioner and its accessories
- Identified by DS6000 automatically

RP7150 1.5GHz BW active probe (optional)



Frequency response curve



Excellent signal fidelity

- 1.5GHz Bandwidth
- Active probe supports both differential and single-ended measurements
- Shipped with the browser probe head
- Provides many kinds of probe connection accessories
- Identified by DS6000 automatically

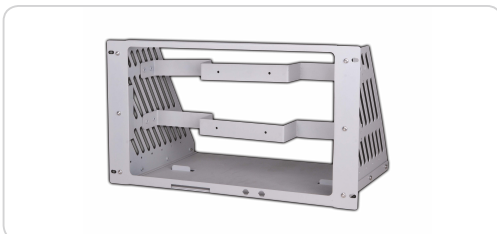
► Other accrssories



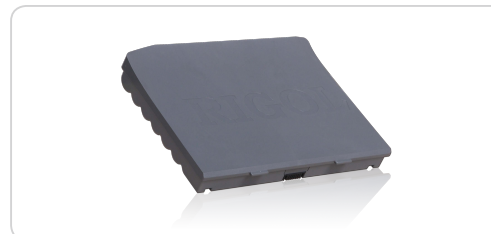
ARM option



Optional USB-GPIB adapter for remote control



Rack mount kit option

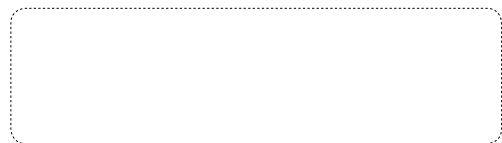


Batter power option

---

**RIGOL**

[www.rigol.com](http://www.rigol.com)



For further information, please contact  
Rigol local Distributors