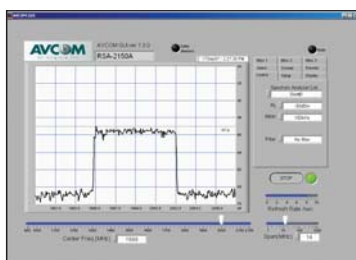


Remote Spectrum Analyzer

Off-Site Carrier Monitoring



User Friendly and Intuitive Remote Graphical Interface For Remote Control and Display of your RSA-2150A Analyzer

RSA-2150A

Technical Specifications

Frequency Coverage:	950 to 2,150 MHz
Span Width:	0 to 500 MHz
Resolution Bandwidth:	1 MHz and 100 kHz
RF Sensitivity:	Greater than -85 dBm typical
Reference Level:	Selectable -10 dBm, -30 dBm, -50dBm
Scale:	5 dB/Div
Dynamic Range:	40 dB on application window
Amplitude Accuracy:	± 2 dB Typical
Input Connector:	BNC 50 ohm ("F" adapter included)
Size:	1 Standard EIA Rack Unit 19"W x 1.75"H x 16"D
Power Requirements:	12VDC, 85 - 265 VAC 50/60 Hz external supply included
Display:	Avcom custom GUI based on National Instruments Labview Platform

Notes: Specifications are based on Avcom control system and graphical user interface and may vary depending on the control system used. Please contact Avcom for specifications based on the selected platform.

Specifications subject change

©2007 Avcom of Virginia, Inc.
RSA-2150ARevC

- ✓ Remote Monitoring From Anywhere In The World
- ✓ Customized GUI's For Specific Applications
- ✓ Data Logging Capabilities
- ✓ Control Systems To Monitor Multiple Units
- ✓ Reduce Personnel Costs
- ✓ Dual Resolution Bandwidth
- ✓ User Friendly And Intuitive GUI

Remote Monitoring

The RSA-2150A is the perfect tool for off-site monitoring of your RF carrier from anywhere in the world over the Internet or Satellite. You can now save money and personnel costs by having your carrier at your fingertips and not be at the mercy of the satellite operator. Using the Avcom custom GUI and software you can now control and monitor one or hundreds of the RSA-2150A's from one PC at a central location! And all this in a single low profile one rack unit design.

Full L-Band Frequency Coverage

The RSA-2150A analyzer covers the full L-Band frequency range of 950-2150MHz for compatibility with any downconverter frequency plan or format. Now you can monitor your L-Band carrier in real time from one central location. This makes it a breeze to quickly identify and troubleshoot a problem remotely without sending anyone to the site!

Versatile Graphical User Interface

The new Avcom Graphical User interface (GUI) is based on the National Instruments Labview Platform and has been customized for several of our customer's applications. Whether your application is Satellite Teleport, Satellite News Gathering (SNG), or remote monitoring for Maritime and Oil and Energy industries, we have a GUI that has been designed to fit your specific need. If not, a custom GUI can be designed for your specific application!

Optional Configurations & Accessories

RSA-2150A	Single RF Input
RSA-2150A-SW2	2 RF Inputs
RSA-2150A-SW4	4 RF Inputs
RSA-2150A-10	10dB Directional Coupler
RSA-2150A-SW2-10	2 RF Inputs Plus 10dB Directional Coupler
RSA-2150A-SW4-10	4 RF Inputs Plus 10dB Directional Coupler

For ordering information visit www.avcomofva.com or call 804-794-2500

7730 Whitepine Road
Richmond, VA 23237
804-794-2500
Fax 804-794-8284